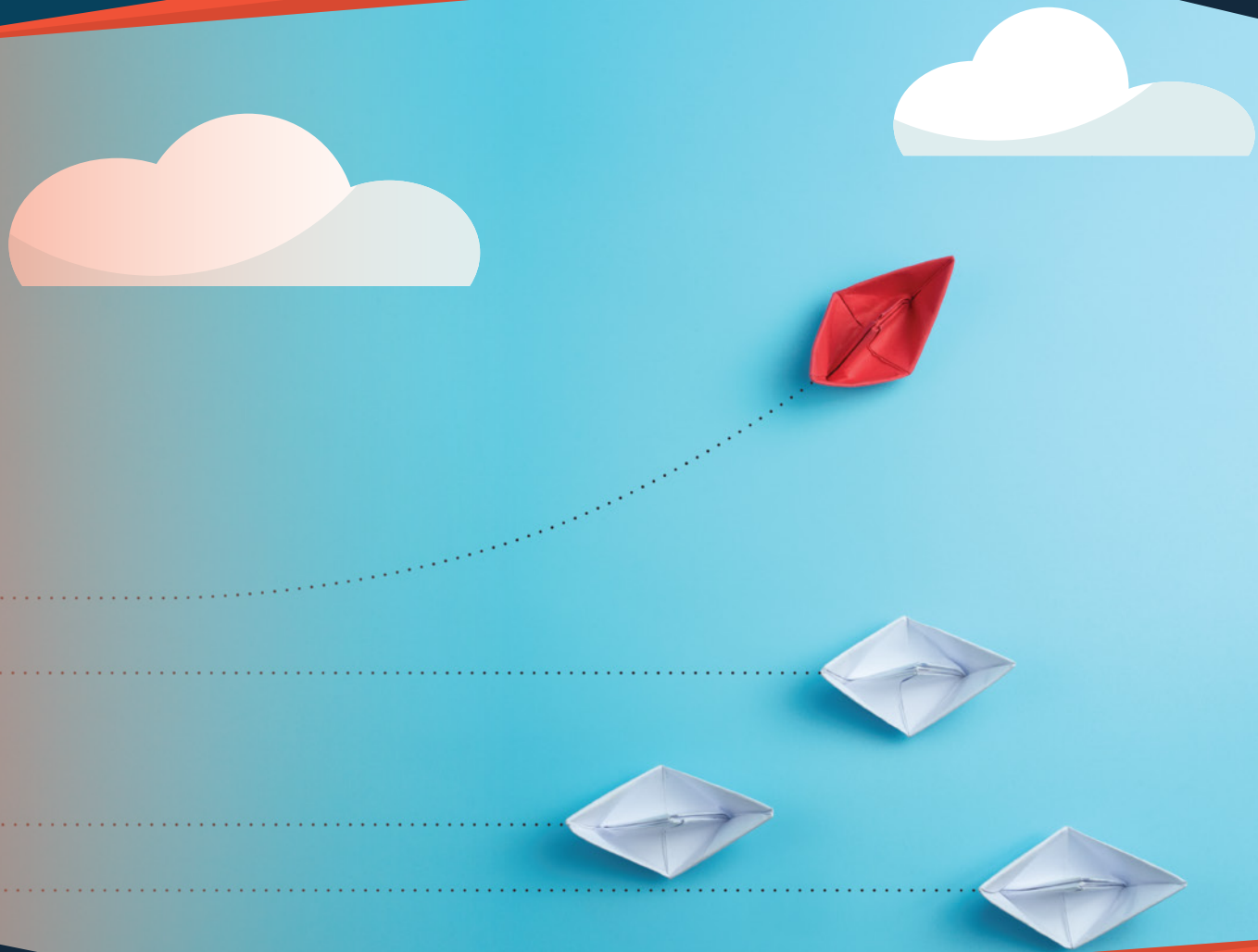




# Azure Migration Services



## Race to Cloud 2.0

Today's technology leaders are tasked with making the critical decision that affect the bottom line and growth of businesses and constantly face growing challenges in cloud adoption and management.

Reality is, many organization's cloud expectations are not being met – high costs, low efficiency, lack of skillsets or resources, to name a few. Without a roadmap in place, a successful migration to Azure will be a difficult one.

# Creation and Execution of a Migration Strategy

## Cloud Readiness Assessment

The first step in your Azure Cloud Journey is the most important one: a comprehensive understanding of cloud expertise needed and the skills to implement the strategy. The Synoptek Cloud Readiness Assessment is designed to provide data analytics, cost analysis and recommendations to drive towards an informed decision. Microsoft's Azure Development Planning Services funding can be used by eligible organizations.

### Discovery

Gather insight from your data – infrastructure, application, dependencies and performance requirements.

### Assessment

A comprehensive analysis of your organization's technology, people and process to determine cloud right-sizing with business model and goals in mind.

End of support for 2008 versions of SQL Server and Windows Server is an ideal time for moving to Azure. Extended Security Updates will be available for free in Azure to help secure your workloads for three more years.

## Migration Planning

To ensure success, a cloud migration roadmap will be built that encompasses costs, tools, security, governance and mapping of your application dependencies. Synoptek leverages the data collected to deliver optimal efficiency upon identifying the best-fit cloud configuration and capability maximization.

### Additional Options – Special Offers

**Extended Support for 3 years** for Microsoft Server 2008 from Microsoft

**Free migration project management and execution** when bundled with Azure Managed Services from Synoptek. \$950 per server when migration execution is purchased separately

**Bring your existing licenses into Azure and reduce your costs.** With Azure Hybrid, you can extend existing on-premises Windows Server license and Software Assurance to the Cloud.

**Save at least 20% more** with Azure Reserved Instances.

## Synoptek is there every step of the way

Azure's breadth and depth of services are best maximized by an IT firm like Synoptek, a Microsoft Managed Partner, Microsoft Tier-1 Cloud Solutions Provider, a Microsoft Gold Cloud Platform Partner, a Microsoft Cloud OS Network Partner, and a five-time Talkin' Cloud Top 100 Cloud Services Provider award recipient.

Synoptek represents competence and expertise with Microsoft technologies with expert IT professionals equipped with diverse cloud management skills and certifications in over 70 disciplines. From cloud assessments to mapping out a cloud migration strategy fit for your environment, Synoptek's seasoned client advisors and support team will be dedicated to your organization.